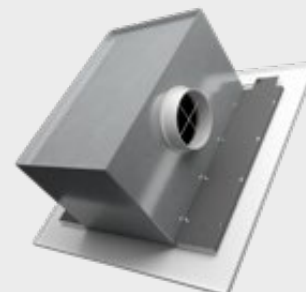
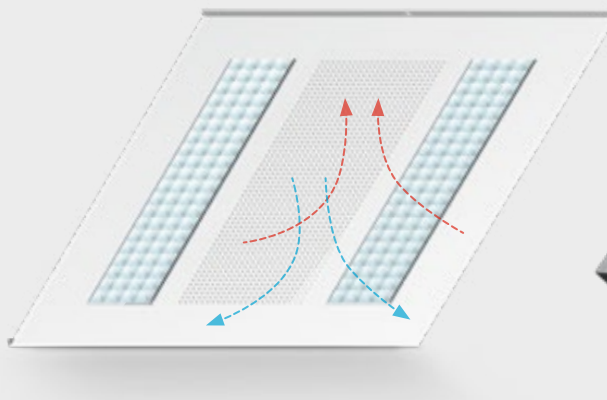


FEATURES

- Lighting with integrated ventilation
- Bartenbach reflector technology
- High efficacy (up to 145 Lm/W)
- Comfortable Airflow
- Suitable for every system
- No irritating glare
- Homogeneous light pattern
- Designed and produced in the Netherlands
- Patented design
- 7 years warranty

Bartenbach
lighting optics

**health
and wellbeing
@work**



Ceiling plate: Matt white RAL 9010
Reflector cups: Chrome

PATENTED

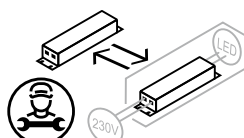
Linessa Air 2L 595x595/620x620 LV

SPECIFICATIONS

Item code	595x595 mm (XX=C3), 620x620 mm (XX=C2) see item specifications
Ventilation holes	100 cm ²
Colour	Ceiling plate: Matt white RAL 9010 (=MW) / Reflector cups: chrome (standard) or white (on request)
Beam angle (FWHM)	Reflector cups chrome: 77° / Reflector cups white 86° (on request)
UGR (4H8H 70/50/20)	<16
Fixture material	Housing: Steel / Reflector optic: Polycarbonate
Environment	Indoor
IK rate	IK03
Operating temperature (Ta)	-20°C / +45°C ¹
Safety marks	EN60598 / EN62031 / EN 62471
EMC compliance	EN55015
Colour consistency (SDCM)	MacAdam step 3
Warranty	7 years * (within the European Union and the countries of the Free Trade Association for products delivered after 1 May 2015)
Energy class	These products contain a light source of energy efficiency class F (2700-6500K) / F (3000K) / E (4000K)

This luminaire contains built-in LED lamps. There are no exchangeable parts inside the luminaire. EU 874/2012

¹ In applications with a flat roof (f.i. car showrooms) the temperatures may exceed 45°C. Please ask our sales office for a special driver.



IP20

ITEM SPECIFICATIONS (PART A)

Description	Item code chrome	Input	mA	W	Lm	Lm/W	CRI (typ.)	UGR	Pf	Ripple	Inrush current	B-16A Fuse
Linessa Air 2L LV 3300Lm 3000K No dim	3DXXSLCHXA02	220-240V	500	23,8	3300	139	83	13.8	0.95	<3%	5A 50µS	50 pcs
Linessa Air 2L LV 3300Lm 3000K 1-10V & Push	3DXXSLCHXE02	220-240V	500	23,8	3300	139	83	13.8	0.95	<3%	5A 50µS	50 pcs
Linessa Air 2L LV 3300Lm 3000K Dali	3DXXSLCHXC02	220-240V	500	23,8	3300	139	83	13.8	0.95	<3%	5A 50µS	50 pcs
Linessa Air 2L LV 4550Lm 3000K No dim	3DXXSLCHSG02	220-240V	700	33,6	4550	135	83	14.9	0.95	<3%	5A 50µS	50 pcs
Linessa Air 2L LV 4550Lm 3000K 1-10V & Push	3DXXSLCHSM02	220-240V	700	33,6	4550	135	83	14.9	0.95	<3%	5A 50µS	50 pcs
Linessa Air 2L LV 4550Lm 3000K Dali	3DXXSLCHSK02	220-240V	700	33,6	4550	135	83	14.9	0.95	<3%	5A 50µS	50 pcs
Linessa Air 2L LV 3450Lm 4000K No dim	3DXXSLCHXB02	220-240V	500	23,8	3450	145	83	14.0	0.95	<3%	5A 50µS	50 pcs
Linessa Air 2L LV 3450Lm 4000K 1-10V & Push	3DXXSLCHXF02	220-240V	500	23,8	3450	145	83	14.0	0.95	<3%	5A 50µS	50 pcs
Linessa Air 2L LV 3450Lm 4000K Dali	3DXXSLCHXD02	220-240V	500	23,8	3450	145	83	14.0	0.95	<3%	5A 50µS	50 pcs
Linessa Air 2L LV 4750Lm 4000K No dim	3DXXSLCHSH02	220-240V	700	33,6	4750	141	83	15.1	0.95	<3%	5A 50µS	50 pcs
Linessa Air 2L LV 4750Lm 4000K 1-10V & Push	3DXXSLCHSN02	220-240V	700	33,6	4750	141	83	15.1	0.95	<3%	5A 50µS	50 pcs
Linessa Air 2L LV 4750Lm 4000K Dali	3DXXSLCHSL02	220-240V	700	33,6	4750	141	83	15.1	0.95	<3%	5A 50µS	50 pcs

ITEM SPECIFICATIONS (PART B)

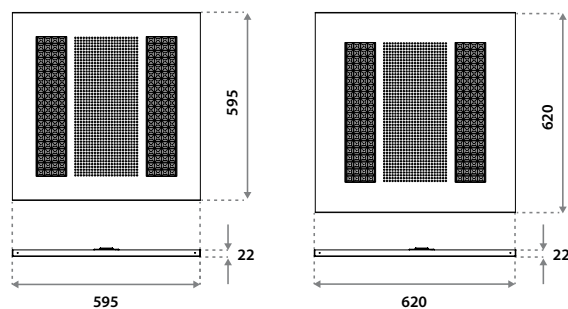
Description	Safety class	Energy class	Weight	Expected Lifetime B10 reported (25°C)		
				L70B10	L80B10	L90B10
Linessa Air 2L LV 3300Lm 3000K No dim	II	F	5020 gr	>54.000 hrs	>54.000 hrs	>54.000 hrs
Linessa Air 2L LV 3300Lm 3000K 1-10V & Push	II	F	5020 gr	>54.000 hrs	>54.000 hrs	>54.000 hrs
Linessa Air 2L LV 3300Lm 3000K Dali	II	F	5020 gr	>54.000 hrs	>54.000 hrs	>54.000 hrs
Linessa Air 2L LV 4550Lm 3000K No dim	I	F	5020 gr	>54.000 hrs	>54.000 hrs	>54.000 hrs
Linessa Air 2L LV 4550Lm 3000K 1-10V & Push	II	F	5020 gr	>54.000 hrs	>54.000 hrs	>54.000 hrs
Linessa Air 2L LV 4550Lm 3000K Dali	II	F	5020 gr	>54.000 hrs	>54.000 hrs	>54.000 hrs
Linessa Air 2L LV 3450Lm 4000K No dim	II	E	5020 gr	>54.000 hrs	>54.000 hrs	>54.000 hrs
Linessa Air 2L LV 3450Lm 4000K 1-10V & Push	II	E	5020 gr	>54.000 hrs	>54.000 hrs	>54.000 hrs
Linessa Air 2L LV 3450Lm 4000K Dali	II	E	5020 gr	>54.000 hrs	>54.000 hrs	>54.000 hrs
Linessa Air 2L LV 4750Lm 4000K No dim	I	E	5020 gr	>54.000 hrs	>54.000 hrs	>54.000 hrs
Linessa Air 2L LV 4750Lm 4000K 1-10V & Push	II	E	5020 gr	>54.000 hrs	>54.000 hrs	>54.000 hrs
Linessa Air 2L LV 4750Lm 4000K Dali	II	E	5020 gr	>54.000 hrs	>54.000 hrs	>54.000 hrs

All values are measured at 230V (+/- 7%).

CHOOSE YOUR LUMEN OUTPUT

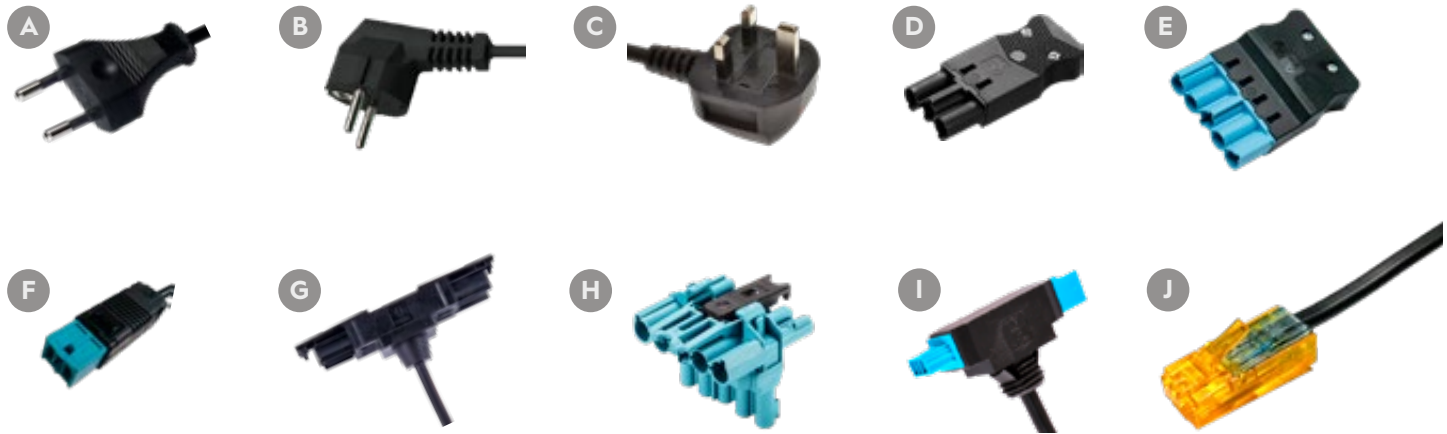
Item	mA	W	Lumen Output		Lumen / Watt		UGR chrome		Driver types		
			3000K	4000K	3000K	4000K	3000K	4000K	No dim	1-10V&Push	Dali
Special request	350	16,6	2350	2450	142	148	12.6	12.8	127570	126421	142014
Standard	500	23,8	3300	3450	139	145	13.8	14.0	127570	126421	142014
Special request	600	28,6	3950	4100	138	143	14.4	14.6	127480N	126421	142014
Standard	700	33,6	4550	4750	135	141	14.9	15.1	127480N	126421	142014
Special request	900	43,5	5800	6000	133	138	15.8	15.9	122204	ECO561A	ECO560A
Special request	1050	51,0	6500	6750	127	132	16.2	16.3	122204	ECO561A	ECO560A

DIMENSIONS



OPTIONAL PLUG & PLAY CABLES

Description		Class	Length	Item code	Length	Item code	Length	Item code
A	Euro plug incl. cable	II	0.3 m	x	2.0 m	015203BL1200	3.0 m	x
B	Schuko plug incl. cable	I	0.3 m	x	1.5 m	1C5203BLA000	3.0 m	x
C	UK plug incl. cable	II	0.3 m	x	2.0 m	0A5203BL1200	3.0 m	x
D	GST18-3 male incl. cable 2x0.75mm²	II	0.3 m	455203BL0000	2.0 m	x	3.0 m	455203BL1500
D	GST18-3 male incl. cable 3x0.75mm²	I	0.3 m	4A5203BL0000	2.0 m	x	3.0 m	4A5203BL1500
E	1-10V/Dali GST18-5 male incl. cable 4x0.75mm²	II	0.3 m	655203BL0000	2.0 m	x	3.0 m	655203BL1500
E	1-10V/Dali GST18-5 male incl. cable 5x0.75mm²	I	0.3 m	6A5203BL0000	2.0 m	x	3.0 m	6A5203BL1500
F	1-10V/Dali BST14i male incl. cable	III	0.5 m	095203BL0000	2.0 m	x	3.0 m	095203BL1500
G	GST18-3 T-splitter male incl. cable	II	0.2 m	459203BL0000	2.0 m	x	3.0 m	x
G	GST18-3 T-splitter male incl. cable	I	0.2 m	4A9203BL0000	2.0 m	x	3.0 m	x
H	GST18-5 T-splitter male	I / II	x	659203BU0000	2.0 m	x	3.0 m	x
I	1-10V/Dali BST14i T-splitter male incl. cable	III	0.2 m	099203BL0000	2.0 m	x	3.0 m	x
J	LV plug to RJ45 plug	III	0.2 m	675205BL0000	2.0 m	x	3.0 m	x



EXAMPLE PLUG & PLAY

